

SO001

SIP SERIES-Mini Outdoor Station 1-Button

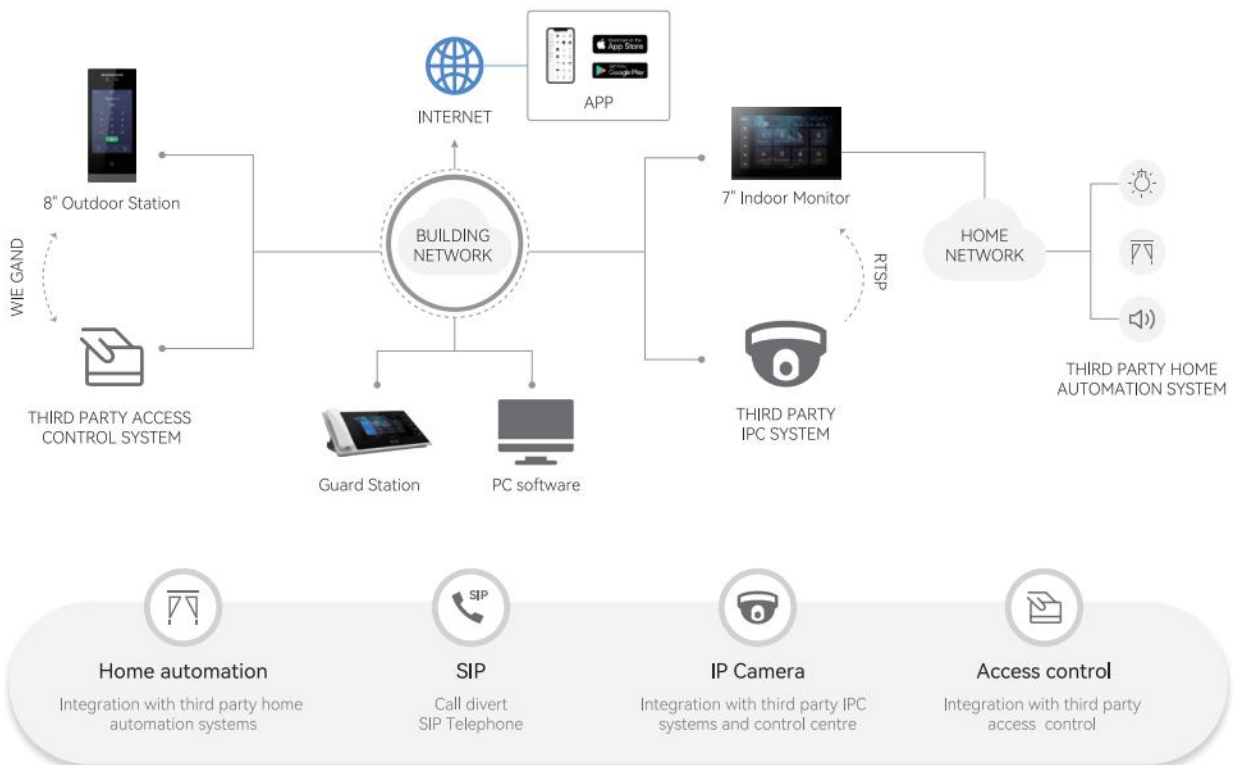
Key Characteristics

Basic Function

- Support SIP protocol
- Support IC card unlock
- Adjustable unlock time
- Door status detection and timeout alarm
- Support online update
- 2 lock mangement



Typical Topology



Specifications

Model	SO001	
System	Processor	High-Performance Embedded SOC Processor
Parameters	Operation system	Embedded Linux Operation System
Video	Camera	CMOS 2 MP HD Colorful Camera
Parameters	Video compression standard	H.264
	Resolution	1024*720
	Video frame rate	15 fps
Audio Parameters	Audio input	Built-in Omnidirectional Microphone
	Audio output	Built-in Loudspeaker
	Audio compression standard	G.711 A
	Audio sample Rate	16K16 Bit
	Audio quality	Noise Suppression and Echo Cancellation
Access Control Parameters	Internal card reader	Built-in IC Card Reader
	Exit button	Exit Button for Opening the Door
	Door magnetic detection	Detects Door Magnetic Status
Light Supplement	Light supplement mode	LED Supplement Visible Light Supplement
Network Parameters	Ethernet	10/100 Mbps Self-Adaptive Ethernet
	Network protocol	TCP/IP, UDP,SIP,HTTP, HTTPS, FTP,RTSP, RTP
Alarm Parameters	Alarm input	Door Magnetic Alarm, Tampering Alarm
Device Interfaces	Network interface	1 RJ-45 10/100 Mbps Self-Adaptive Ethernet Interface
	I/O output	Door lock, Door status detection
	Material	Aluminium faceplate
	Power supply	DC 24V
	Power consumption	≤12 W
	Working temperature	-20° C to +55° C (-4° F to 131° F)
	Working humidity	10% to 90%
	IP protection level	IP54
	Dimensions (L × W × H)	120mm × 194 mm × 44.7mm
	Certification	CE, ROHS

Appearance and Interfaces

