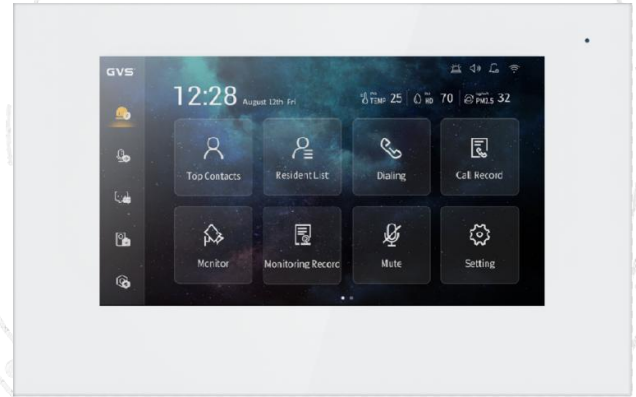


SI703 S SERIES-7" Indoor Monitor

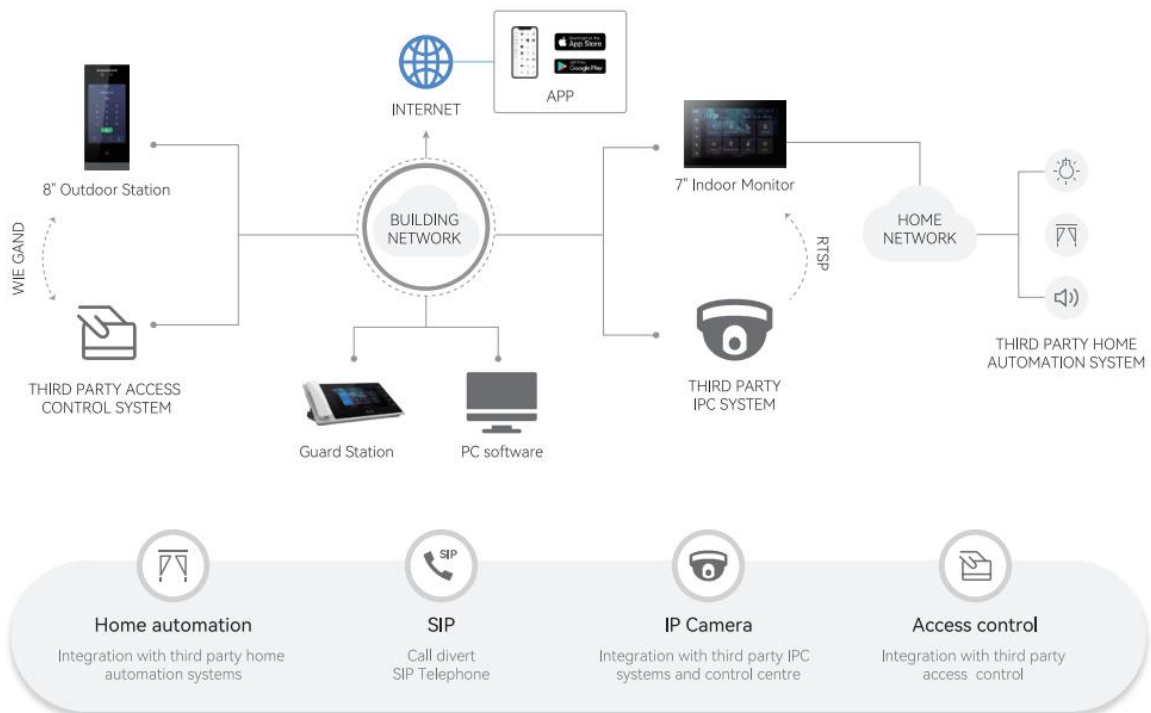
Key Characteristics

Basic Function

- 7" capacitive touch screen , 1024*600 resolution
- Support custom wallpaper and screensaver
- Multi - indoor monitor in one apartment
- Voice message, blacklist, whitelist feature
- RS485 for smart home setting
- 5 defense zone alarm input
- RTSP for IP camera setting
- Determine the usage scenario according to the user



Typical Topology



Parameters

Model	Model Number	SI703
System Parameters	Processor	High-Performance Embedded SOC Processor
	Operation system	Embedded Linux Operation System
Display Parameters	Display screen	7-inch Colored TFT LCD
	Display resolution	1024 × 600
	Operation method	Capacitive Touch Screen
	Operation interface	Delicate Flattened UI Operation Interface
Audio Parameters	Audio input	Built-in Omnidirectional Microphone
	Audio output	Built-in Loudspeaker
	Audio compression standard	G.711 A
	Audio <u>sample</u> rate	16K 16 Bit
	Audio quality	Noise Elimination and Echo Cancellation
Network Parameters	Ethernet	10/100 Mbps Self-Adaptive Ethernet
	Network protocol	TCP/IP, UDP, SIP , HTTP , HTTPS , FTP , RTSP , RTP
Alarm Parameters	Alarm input	5-channel Defense Zone Alarm Inputs
Device Interfaces	Network interface	1 RJ-45 10/100 Mbps Self-Adaptive Ethernet Interface
	RS-485	1 RS-485 Half-Duplex Port
	I/O output	Unlock button
General	Memory	50 Photos
	Power supply	48V Power Over Ethernet
		DC 24V
	Power consumption	<7W_24V_300mA
	Working temperature	-10° C to + 45° C
	Working humidity	10% to 90%
	Dimensions (L × W × H)	182 mm × 119 mm × 15 mm
Certification	CE, ROHS	

Appearance and Interfaces

